

RAIL YARD MODELS

FRUEHAUF 52'-6" GONDOLA

PROTOTYPE HISTORY

Starting in mid-1971 and continuing through mid-1972, 1500 of these 52' gondolas were built by Fruehauf for the Penn Central. The clean and simple design was designated as G47 and placed into two number series: 1000 steel floored cars numbered 580100-581099 and 500 wood floored cars numbered 564950-565449.

During the Penn Central era these cars could be found hauling various loads from scrap metal to spools of wire. In April of 1976 these cars were inherited by Conrail. At first, they were changed to CR reporting marks while keeping their PC numbering, but eventually many were repainted into full Conrail paint. to the series. At some point in time, Conrail began using these cars in coil steel service. Cars put into steel coil service were fitted with specially fabricated coil cradles designed to hold the coils and keep them from rolling around in the car. These cars were reclassified as GBS and numbered into the 608083-608917 series.

In May 1998, Conrail was divided between CSX and NS. In this division, some G47 cars went to each railroad. Some G47 cars were re-stenciled for CSX with "NYC" reporting marks while keeping their Conrail numbers.

Gondolas typically see very rough service and are frequently damaged. The G47 class was no exception. Photographs of these cars over their history show them with at least three variations of end panels. As built, these cars had three rib dreadnaught ends. As ends were damaged, replacement panels would be installed. Photos showing what appear to be three rib Pullman/Despatch styled end panels as well as ends fabricated from steel plate and three steel channels have been found. Sometimes with different styles on the same car. Repairs and repaints to these cars have been found as early as 1975.



G47 in Allentown, PA. Photo by Charles Houser, Sr. from the collection of Mark Branibar © 2004



G47 in PC Repaint. Photo by Joseph R. Quinn, from the collection of Mark Branibar © 2004



G47 in fresh Conrail paint near Thompsettown, PA 1998. Photo by Gene Fusco, © 2004



NYC (CSX) marked G47 in Ft. Collins, CO, 2004. Photo by Gene Fusco, © 2004

RAIL YARD MODELS FRUEHAUF 52'-6" GONDOLA

Although the exact date isn't known, by mid-2007 some ex-Conrail G47 cars inherited by Norfolk Southern have been rebuilt and repainted. The rebuild program includes replacing the car ends and the side panels between the bolster and car ends. The rebuilt cars are now in NS class GP28 and have been repainted black with NS reporting marks.

It also appears that NS and CSX are selling or leasing off some of their G47 fleet. G47 cars have recently been seen wearing YARR reporting marks. YARR is the Youngstown & Austintown R.R. which is a part of the Ohio Central Railroad System.



Norfolk Southern 616540, a class GP28 gondola in slab steel service at Enola, PA.
16 September 2007. Photo by Gene Fusco, © 2007

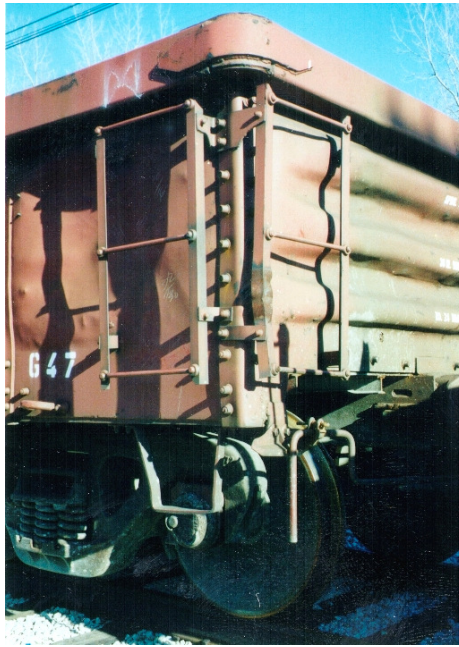
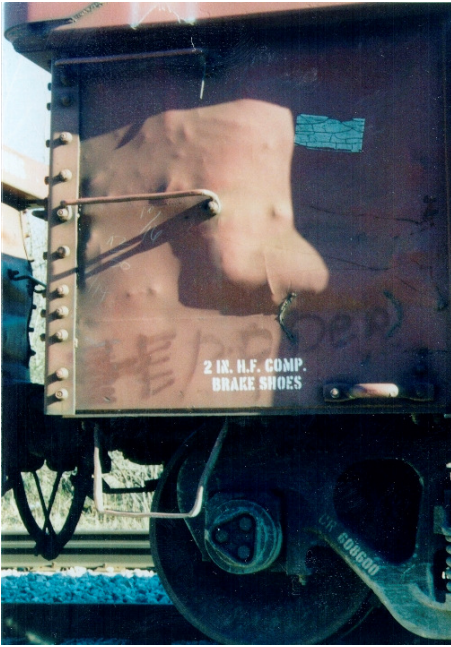


Norfolk Southern 616540 shown from above at Enola, PA.
16 September 2007. Photo by Jerry Jordak, © 2007



YARR 139 is an ex-Conrail G47 seen at Cassandra, PA on September 10th 2007.
Photo by Gene Fusco, © 2007

RAIL YARD MODELS FRUEHAUF 52'-6" GONDOLA



All photos on this page from the collection of Gene Fusco © 2004, used with permission.

RAIL YARD MODELS FRUEHAUF 52'-6" GONDOLA



Norfolk Southern GP28 (rebuilt ex-Conrail G47) Note the new end panel and side sheet.

RAIL YARD MODELS

FRUEHAUF 52'-6" GONDOLA

Penn Central/Conrail/CSX/Norfolk Southern Gondola Class G47											
Series	PC 564950	PC 580100	CR 564950	CR 580100	CR 581100	CR 608083	NYC 564950	NYC 580100	NYC 581100	NYC 608083	
ORER	565449	581099	565449	581099	581199	608917	565449	581099	581199	608917	
Date	Wood	Steel	Wood	Steel	Steel	GBS	Wood	Steel	Steel	GBS	Total
Apr-73	500	999									1499
Apr-75	500	998									1498
Apr-78	453	888	47	109	0	0					1497
Jan-82	200	358	280	639							1477
Jul-82	172	290	304	711	Note						1477
Jan-83	54	107	383	877	55						1476
Apr-84	64	107	278	877	58						1384
Apr-87	1	4	416	874	79						1374
Oct-91	1	3	310	976	96						1386
Oct-96	0	3	233	450	52	90					828
Jan-01	0	0	44	125		82	36	85		58	430
Jan-04	0	0	28	114		76	11	52		50	331

Notes:

Jul-82 ORER Series ranged 580100-581118, cars above 581100, included in 580100-1099 series
 608XXX series Starts showing cars in Apr '93 issue, However no G-47 cars are listed